

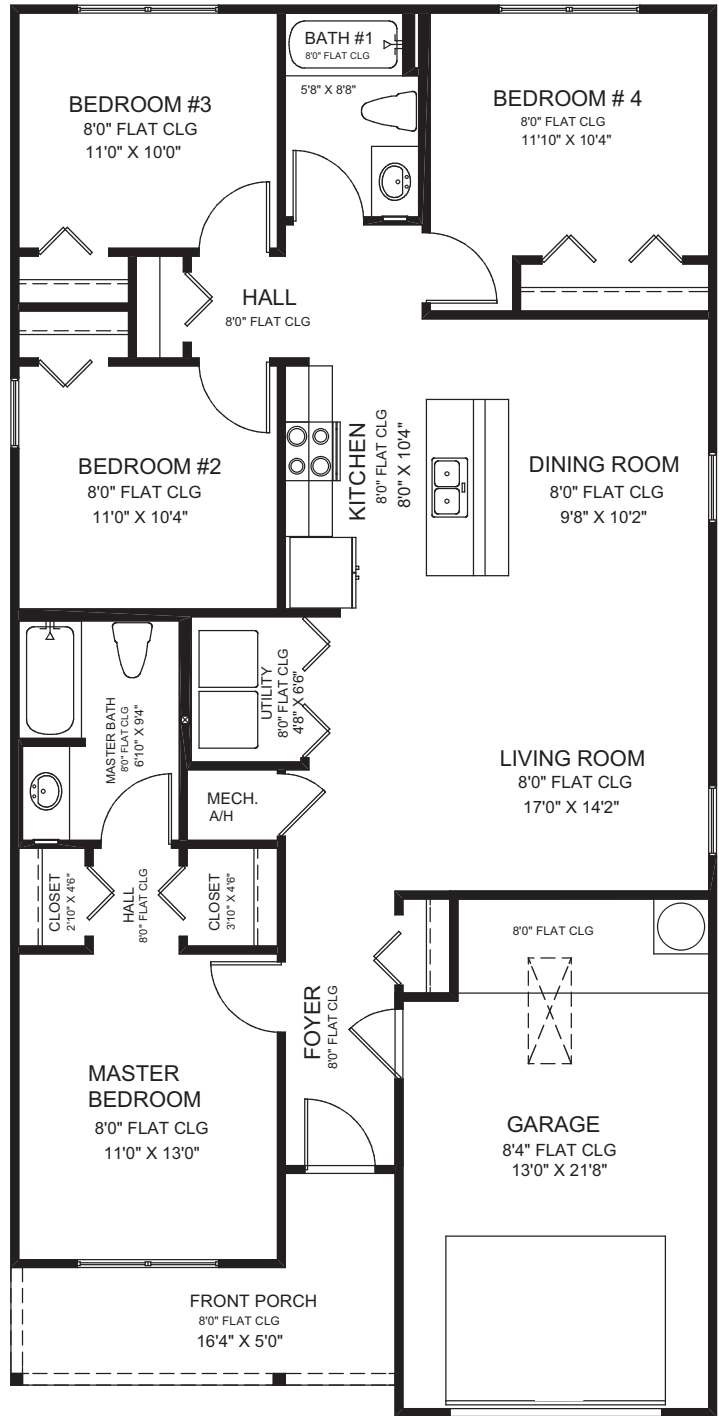


# Palmera B1 & B2

3 bedroom/2 bathroom & 4 bedroom/2 bathroom



\*Pictured is a right hand model. Finished product may be flipped or may vary from that shown.



## About this home:

- Energy Star Rated
- Whirlpool Appliances
- Central A/C
- Vinyl Tile and Carpeting Options
- Include Storm Shutters
- Covered Front and Rear Porches
- 1-Year Home Warranty
- Ceiling Fans in Great Room and Bedrooms

Area Calculations		
Area	3BR SQ. FT.	4BR SQ. FT.
Living	1,233 SF	1,397 SF
Front Porch	100 SF	100 SF
Garage	287 SF	290 SF
Lanai	158 SF	NONE
<b>Total Area</b>	<b>1,778 SF</b>	<b>1,787 SF</b>

For more information, visit: [habitat4humanity.org](http://habitat4humanity.org) • 239-652-HOME (4663) • 1288 North Tamiami Trail, North Fort Myers, FL 33903